



EURO

HI-TECH RESIDENCY

Site Address:

Plot # : D-13, Block-F North Nazimabad Karachi,

Phone : 021-36677139 - 35482552

Fax : 021-36642693

Cell : 0321-2240651

Email : info@eurogroupk.com

Website : www.eurogroupk.com

The material contained herein are summary in nature, subject to change and intended for general information only. All other product names used herein are trademarks or registered trademarks of their respective owners EURO Builders & Developers, reserve rights to add, amend alter or to change and condition(s).



EURO

HI-TECH RESIDENCY

LUXURY APARTMENTS
THAT SHINES LIKE SILVER



LUXURY
APARTMENTS
THAT SHINES
LIKE SILVER



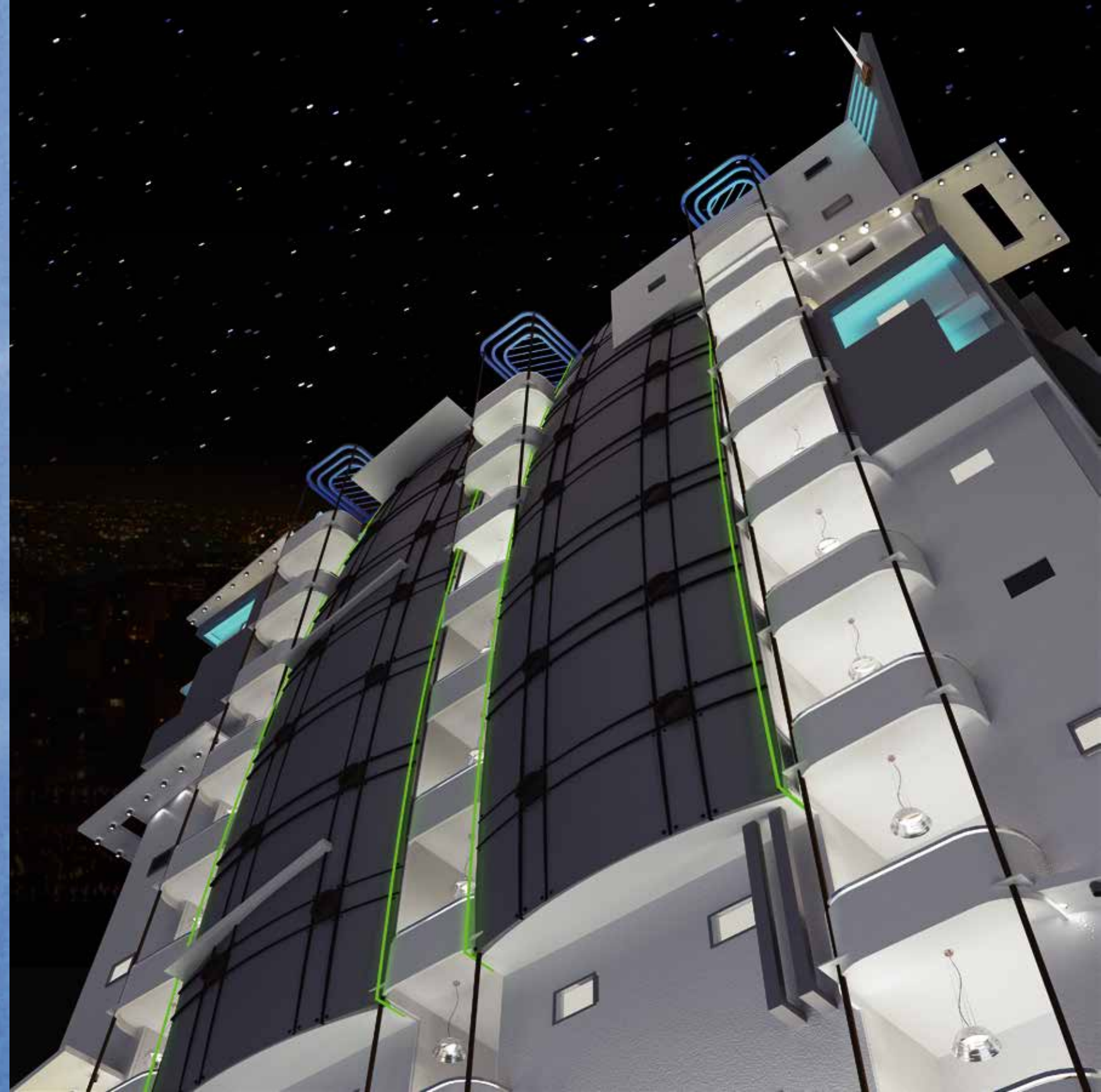
“ARIEL VIEW OF
HI-TECH RESIDENCY”





EURO

HI-TECH RESIDENCY





EURO REGENT PARK

Expected Possession Date : Jun. 2014



EURO CONTINENTAL TOWER

Expected Possession Date : Dec. 2013



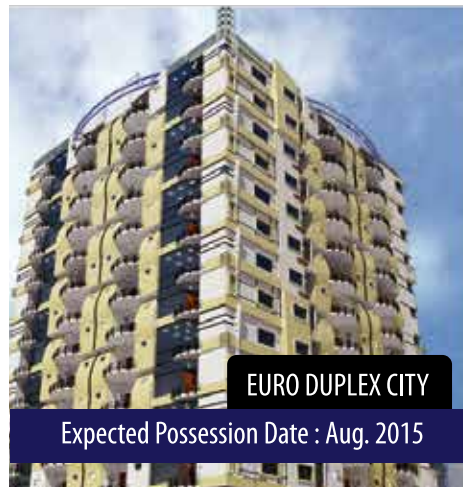
EURO GRAND PARK

Expected Possession Date : Dec. 2015



EURO TWIN TORRE

Expected Possession Date : Dec. 2014



EURO DUPLEX CITY

Expected Possession Date : Aug. 2015



EURO CLOCK TOWER

Expected Possession Date : Jun. 2014

AS PER
COMMITMENT
POSSESSION GIVEN
ON TIME



THE GROUP - CONSTRUCTION WITH HONOR

ABOUT EURO BUILDERS & DEVELOPERS

Euro Builders & Developers is one of the consistent and most promising construction companies in Karachi, having 9 years of collaborative experience in residential and commercial sectors.

The company has wide experience in residential segments with currently 7 projects under its execution and planning. The expertise of the company is in developing excellent residential complexes with quality amenities for better standard of living. Company will complete the quality project in given time.

OUR ASSOCIATE COMPANIES INCLUDE:

- Euro Estate Services
- Euro Tech Computer
- Euro Arch



LUXURIOUS
BEDROOMS

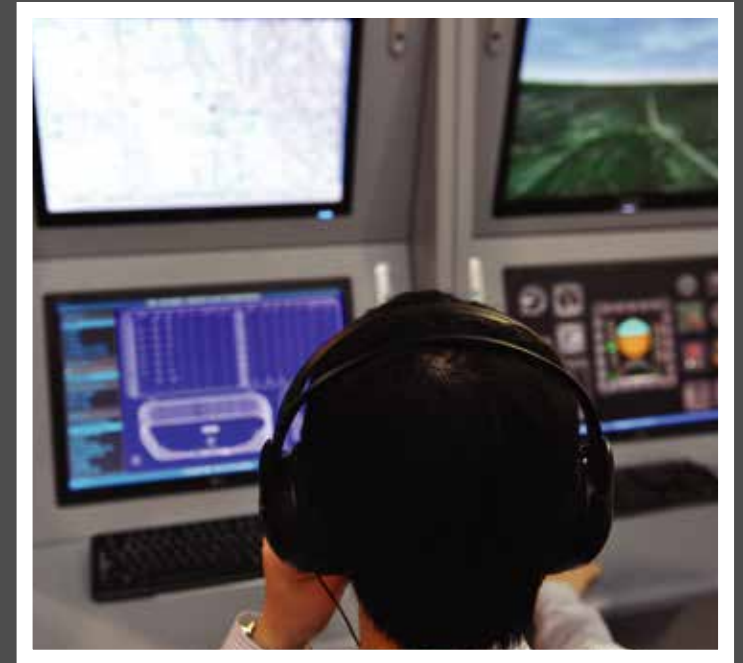


SALIENT FEATURES

- 11 stories of apartments
- 77 exclusive apartments
- Earthquake resistant design
- Branded hi-speed passenger lift with dual power backup
- Reception area
- Intercom system
- Stunning communal areas
- Elegantly designed visitor's lobby
- Security CCTV & guards
- Three floors of convenient covered parking
- Telephone and ready to connect cable TV interfaces
- Interior designed entrance foyer
- Natural light & fresh air
- Porcelain floor tiles
- Imported doors & fixtures
- UPVC door in bathrooms

“INTERNATIONAL
STANDARD
INTERIOR DESIGNS”

MODERN SECURITY SYSTEM



BRANDED PORCELAIN TILES

“STYLISH KITCHEN WHERE YOU LOVE TO COOK”



“LAVISH INTERIOR AS
MASTERPIECE”



“QUALITY
BATHROOM
FIXTURES”



PROJECT HIGHLIGHTS

- 11 stories of apartments
- Earthquake proof structure
- 3, 4 & 5 rooms apartments
- Well ventilated American kitchen
- 77 apartments
- Reserved car parking
- Natural light & fresh air
- Modern hyundai elevators
- Backup power
- Centralized, piped gas lines
- Security & extreme privacy
- Porcelain floor tiles
- Imported sanitary wares
- Imported doors & fixtures
- Concealed cabling (Tel, Cable, Intercoms)
- Integrated electric control panels
- UPVC door in bathrooms

“CREATIVE AND
UNIQUE INTERIOR
DESIGNS”



SILVER FEATURES

- Water purification system (RO)
- Home automation (Energy saving)
- Wi-Fi enabled residential tower
- UPVC door in bathrooms
- Fitness center for daily workout
- World class security & life safety systems
- Dual backup branded generator
- Power backup for each apt. up to 2 KVA
- 2 passenger lifts
- Children play area
- Superior quality branded sanitary fixtures
- Trash chutes
- Air conditioned pray area
- Exterior finish with alucobond colors
- Company based maintenance service at low cost



WE CARE YOUR HEALTH

Kiosks can monitor and track blood pressure, pulse, weight, body fat, BMI and temperature. The health kiosk will then provide the individual with a printout of their biometric test results which they can save and compare with future test results.



WE LOVE PURITY

HIGH QUALITY ELEGANT RO SYSTEM

A reverse osmosis drinking water system is the most effective and most economical way to provide your family with great tasting, quality, clean, drinking water.

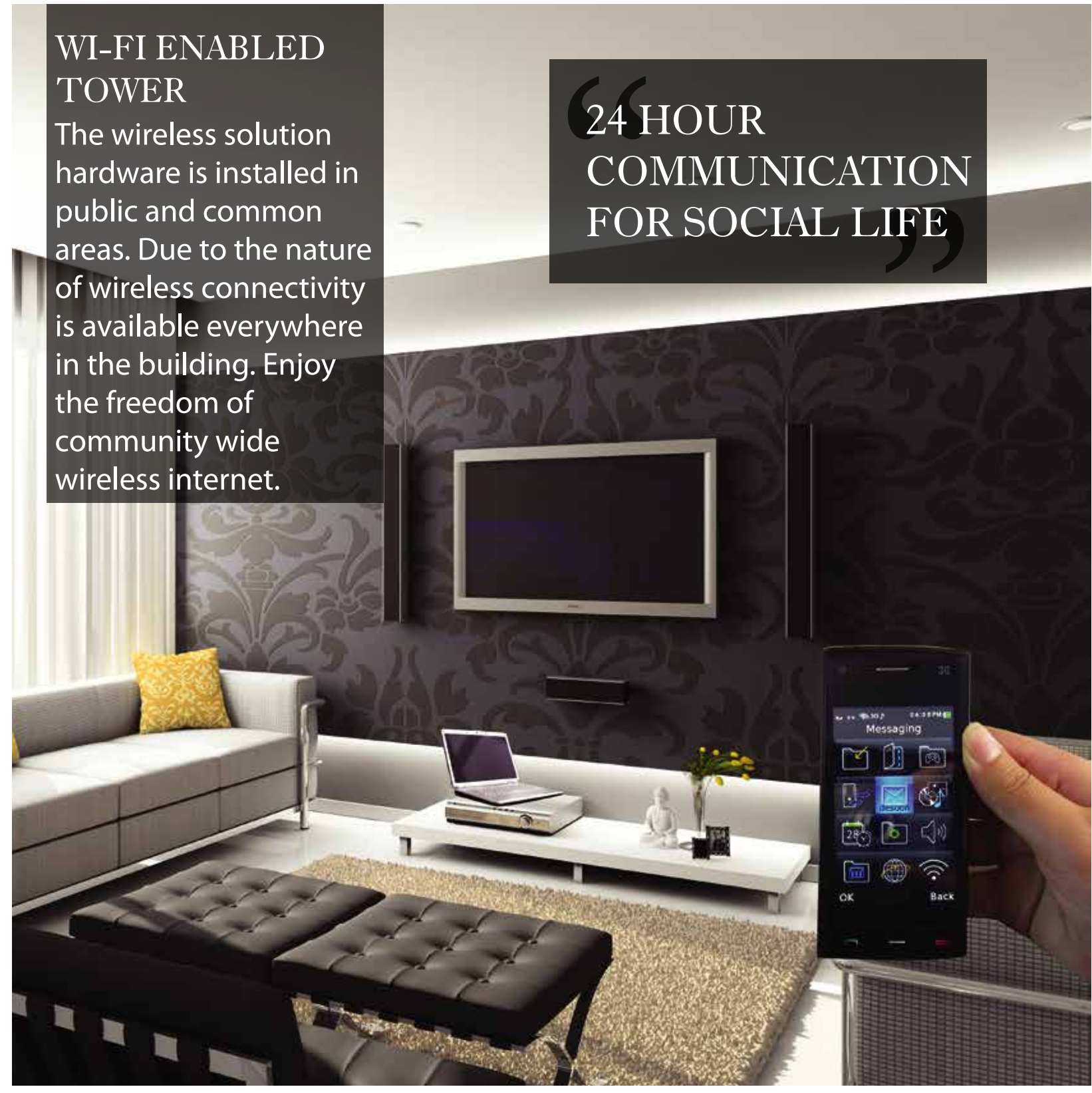
Individual RO line in kitchen.



WI-FI ENABLED TOWER

The wireless solution hardware is installed in public and common areas. Due to the nature of wireless connectivity is available everywhere in the building. Enjoy the freedom of community wide wireless internet.

24 HOUR COMMUNICATION FOR SOCIAL LIFE



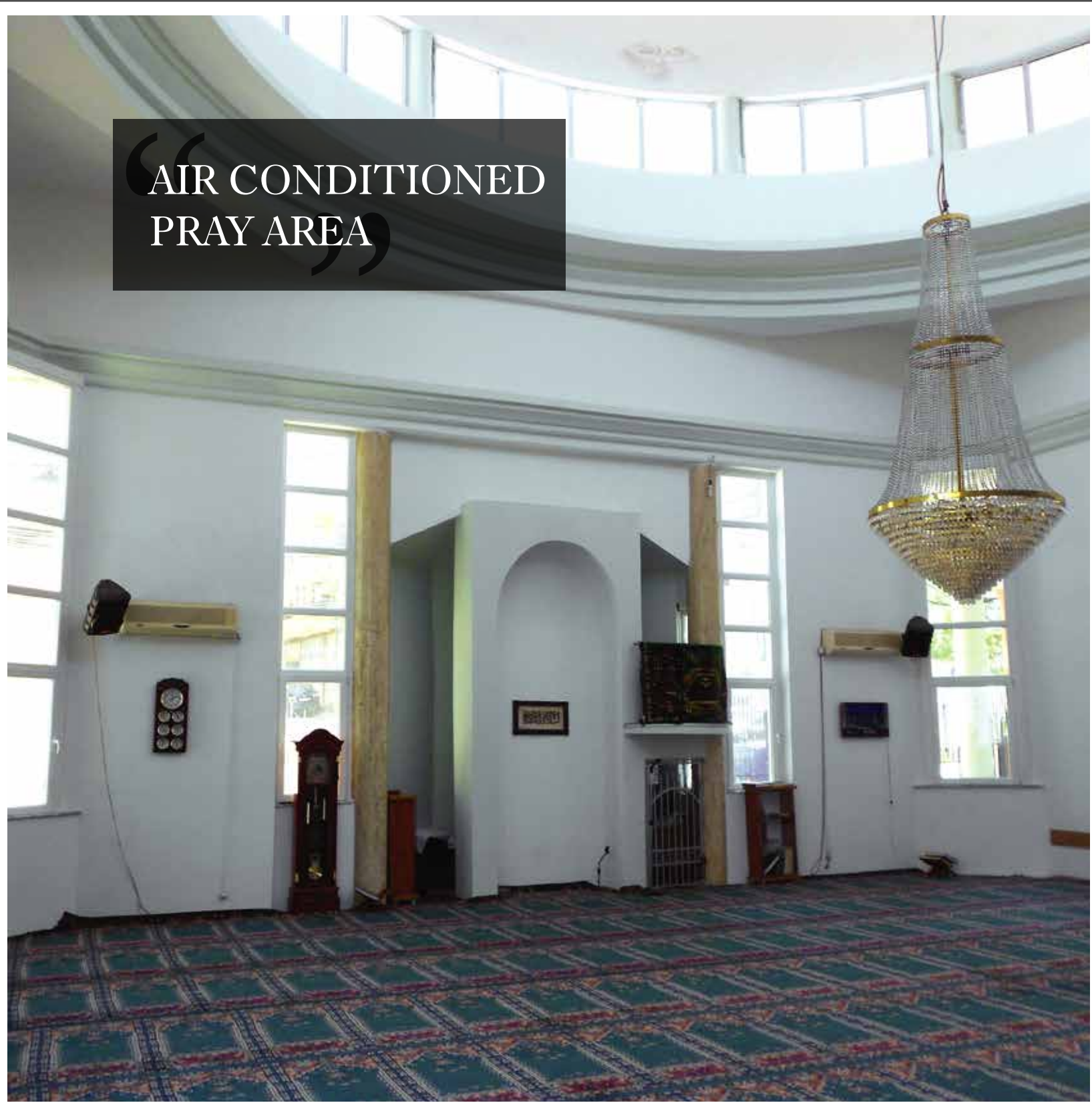
HOME AUTOMATION

Today's "SMART HOME" needs to do more than to provide lighting ambience or warming carbon footprints and ever increasing energy bills, intelligent building control systems also need to make a measurable contribution to the energy efficiency of a modern home.

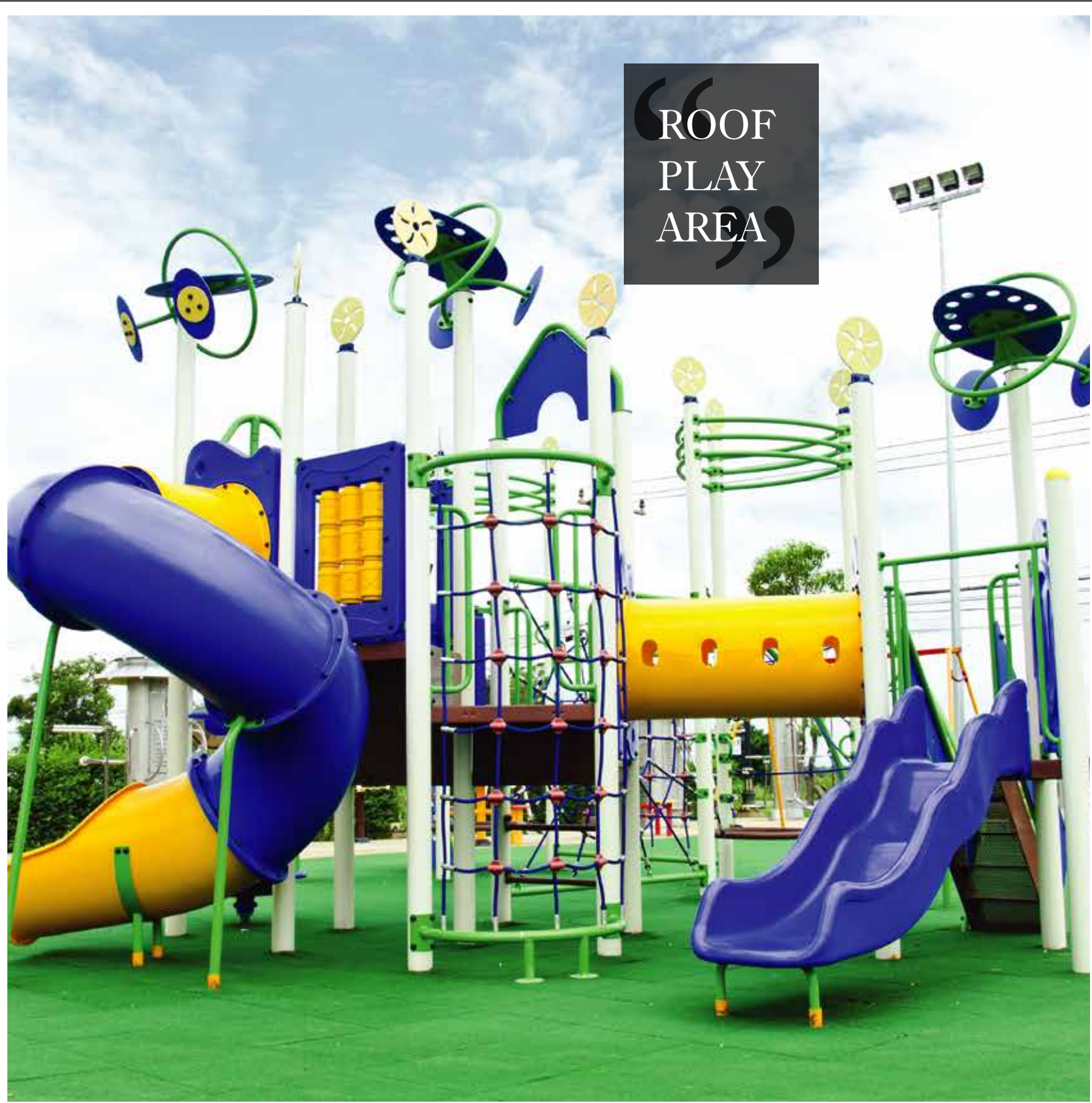
- IMPROVED LIFESTYLE
- LUXURIOUS LIVING
- ENERGY SAVING
- INCREASING PROPERTY VALUE



“AIR CONDITIONED
PRAY AREA”



“ROOF
PLAY
AREA”

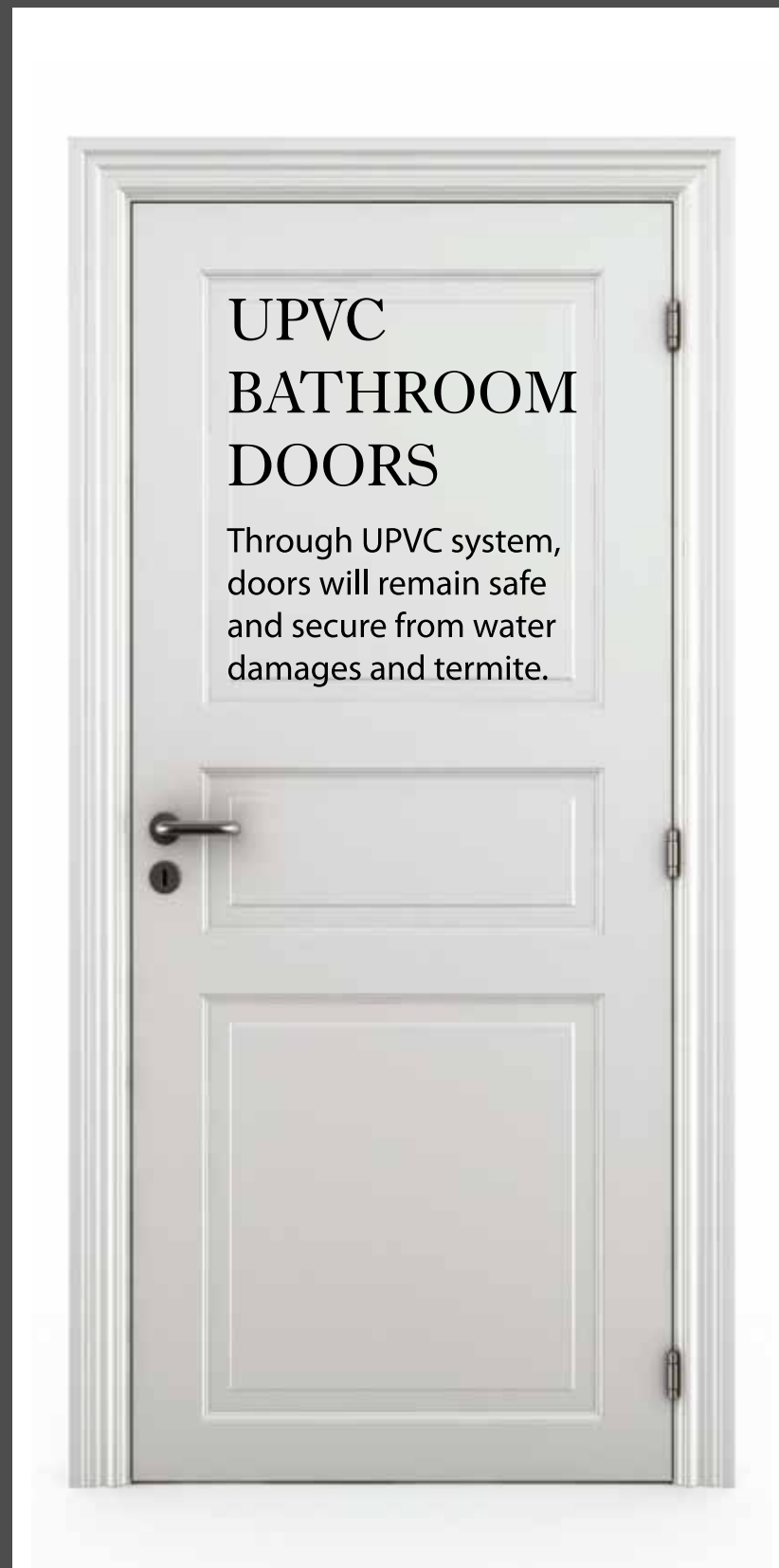




FITNESS CENTER
FOR DAILY WORKOUT



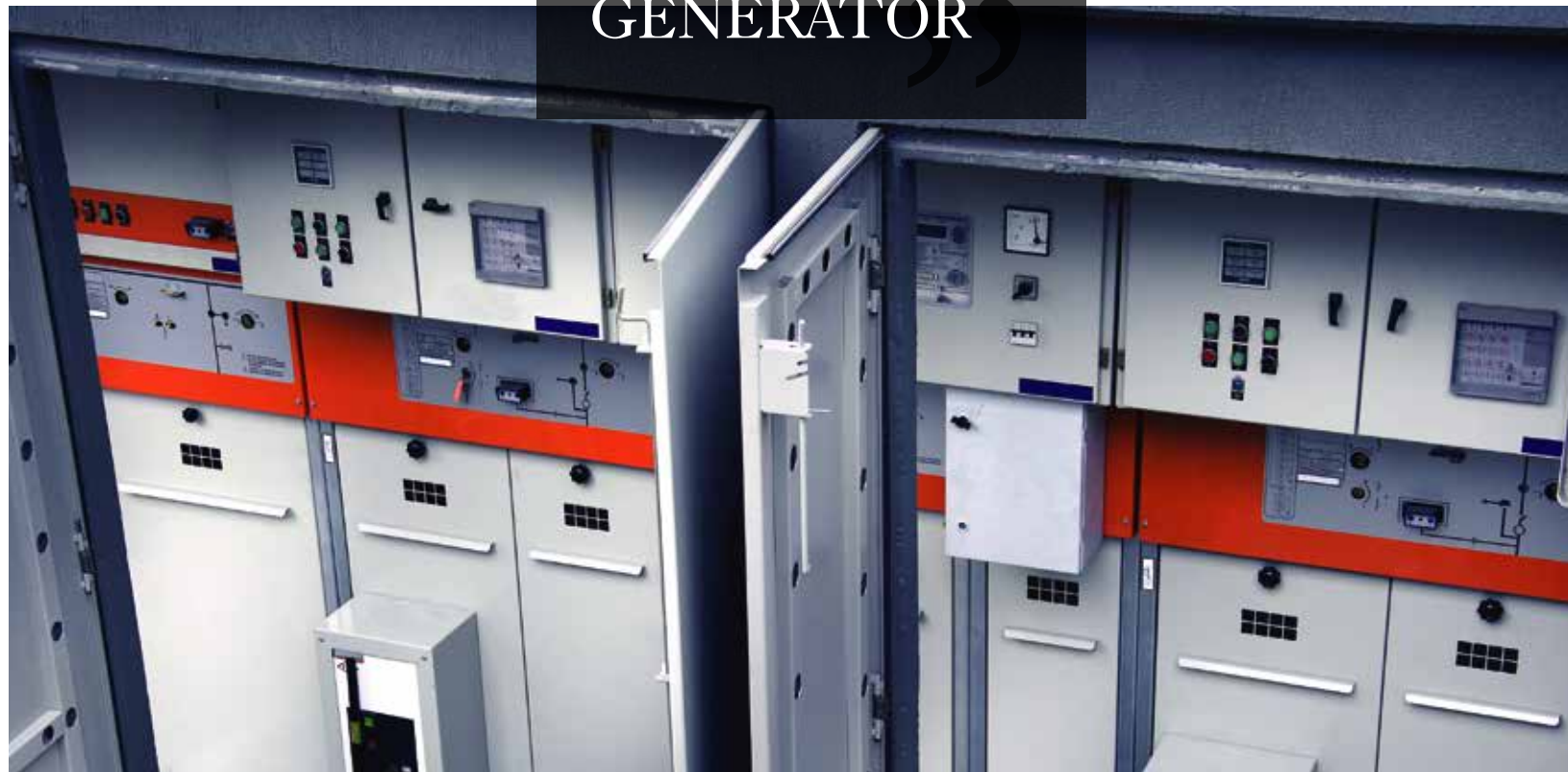
DIGITAL DOOR
LOCKS



UPVC
BATHROOM
DOORS
Through UPVC system,
doors will remain safe
and secure from water
damages and termite.



POWER BACKUP GENERATOR



RESERVED COVERED CAR PARKING

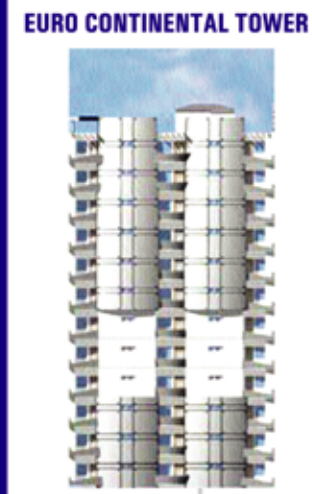


HYDERI MARKET

POST OFFICE



SAIFEE HOSPITAL



A.O. HOSPITAL



FIVE STAR CHOWRANGI



KDA CHOWRANGI



BOARD OFFICE PUL

PETROL PUMP PUL

DOLMEN MALL

KFC

MCDONALD

BOARD OFFICE CHOWRANGI



EURO GRAND PARK

Developer

Architect

Concept Design

